

GTR-AR-112-MH-SV-BR-NL-PLAT (LARGE)

Description and Application:

LED Retrofit Kit for Large Outdoor Pole/Arm Mounted Luminaires.

Mounting Option:

- PLAT - (LARGE) = Custom Plate
- For large fixtures with minimum dimensions 22.5" x 22.5" x 9"

Driver Voltage/Wattage:

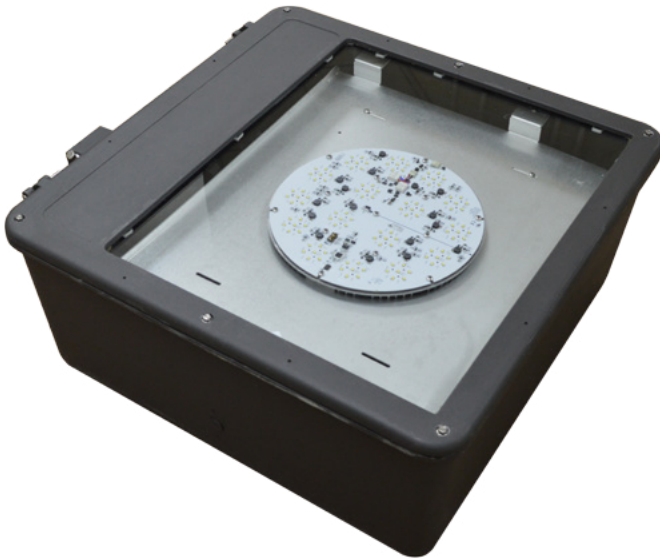
Two Each: 120-277vAC, 192w input / 24vDC output

Additional Information:

Warranty:
Solstice Light Engine - 10 year warranty
Driver - 5 year warranty

Surge Protector:
- Recommended for all outdoor applications

L70 > 100,000hrs.
TM21 - L70 > 60,000hrs.



Minimum Fixture Dimensions: 22.5" x 22.5" x 9"



NOTE For Fixture or Plate sizes less than the minimum dimensions shown here Please refer to Product Spec Sheet with Model number GTR-AR-112-ML-SV-BR-NL-PLAT



Fully Compliant with ARRA Buy American Requirements. Made in the USA.



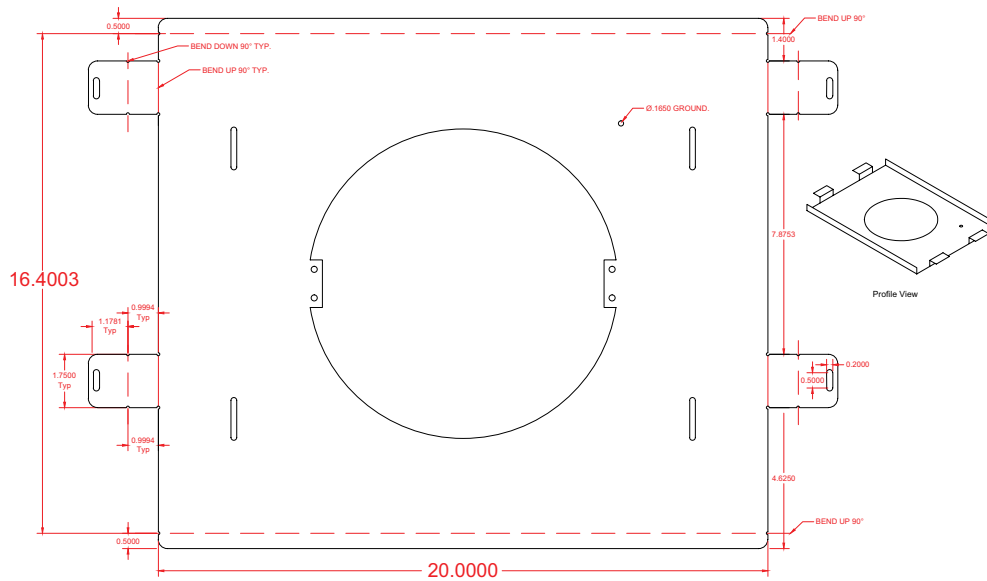
Plate Assembly Schematic for:

GTR-AR-112-MH-SV-BR-NL-PLAT (LARGE)

SR16-8R1

Details

**Minimum Internal Kit Dimensions:
20" x 16.4"**



*****NOTE***** For Fixture or Plate sizes less than the minimum dimensions shown here Please refer to Product Spec Sheet with Model number GTR-AR-112-ML-SV-BR-NL-PLAT

Ordering Code Example:

GTR-AR - 112 - MH - SV - BR - NL - PLAT-LARGE

GTR-AR	-	112	-	MH	-	SV	-	BR	-	NL	-	PLAT-LARGE
Fixture		LED Model #		Wattage Output		Diver Input Voltage		Kelvin		Optics		Mounting Method
GTR-AR		112		MH = (260W)		SV = 120-277V		BR = 5000K (80CRI)		NL = No Lens		PLAT - LARGE

Fully Compliant with ARRA Buy American Requirements. Made in the USA.