

## GTR-AR-112-HI-HV-YL-NL-PLAT (LARGE)

### Description and Application:

LED Retrofit Kit for Large Outdoor Pole/Arm Mounted Luminaires.

### Mounting Option:

- PLAT - (LARGE) = Custom Plate
- For large fixtures with minimum dimensions 22.5" x 22.5" x 9"

### Driver Voltage/Wattage:

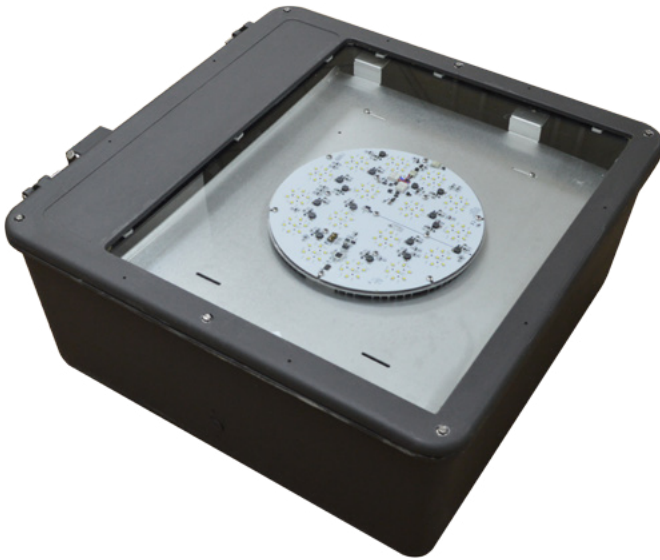
Two Each: 480Vac, 205w input / 24vDC output

### Additional Information:

Warranty:  
Solstice Light Engine - 10 year warranty  
Driver - 5 year warranty

Surge Protector:  
- Recommended for all outdoor applications

L70 > 100,000hrs.  
TM21 - L70 > 60,000hrs.



Minimum Fixture Dimensions: 22.5" x 22.5" x 9"



**\*\*\*NOTE\*\*\*** For Fixture or Plate sizes less than the minimum dimensions shown here Please refer to Product Spec Sheet with Model number GTR-AR-112-ML-SV-BR-NL-PLAT



Fully Compliant with ARRA Buy American Requirements. Made in the USA.



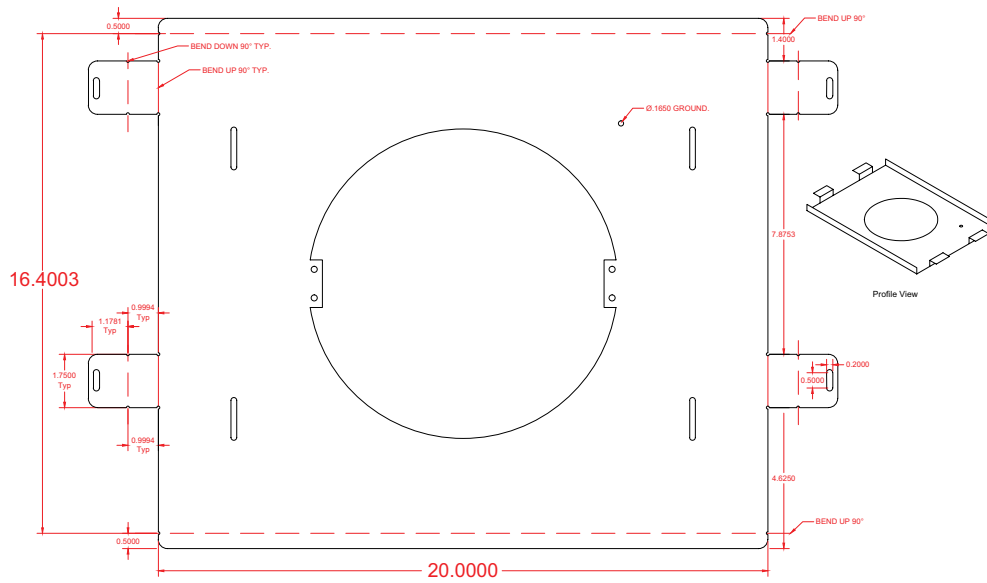
# Plate Assembly Schematic for:

## GTR-AR-112-HI-HV-YL-NL-PLAT (LARGE)

SR16-11R1

### Details

**Minimum Internal Kit Dimensions:  
20" x 16.4"**



**\*\*\*NOTE\*\*\*** For Fixture or Plate sizes less than the minimum dimensions shown here Please refer to Product Spec Sheet with Model number GTR-AR-112-ML-SV-BR-NL-PLAT

Ordering Code Example:

GTR-AR - 112 - HI - HV - YL - NL - PLAT-LARGE

|         |   |             |   |                |   |                     |   |                    |   |              |   |                 |
|---------|---|-------------|---|----------------|---|---------------------|---|--------------------|---|--------------|---|-----------------|
| GTR-AR  | - | 112         | - | HI             | - | HV                  | - | YL                 | - | NL           | - | PLAT-LARGE      |
| Fixture |   | LED Model # |   | Wattage Output |   | Diver Input Voltage |   | Kelvin             |   | Optics       |   | Mounting Method |
| GTR-AR  |   | 112         |   | HI = (300W)    |   | HV = 480V           |   | YL = 4000K (70CRI) |   | NL = No Lens |   | PLAT - LARGE    |

**Fully Compliant with ARRA Buy American Requirements. Made in the USA.**